

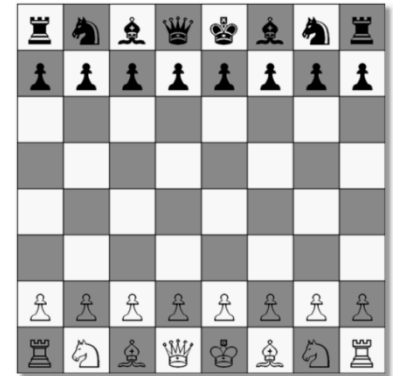
Chess for Kids



Aim of the Game: The aim of the game is to use your army to capture the enemy's king.

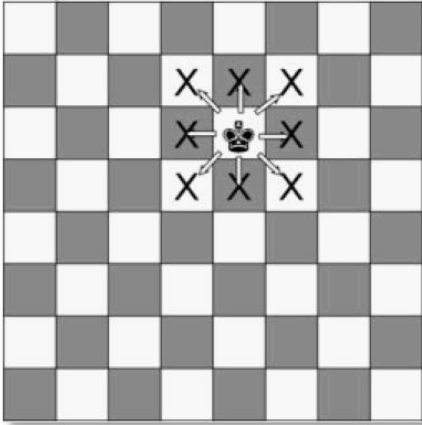
The Armies: There is a white army and a black army. Both armies have the same pieces, which move according to the diagrams below.

Set up: Set up the board so that you have a white square on the corner of the board by your right hand. Place your armies on the board as shown to the right...

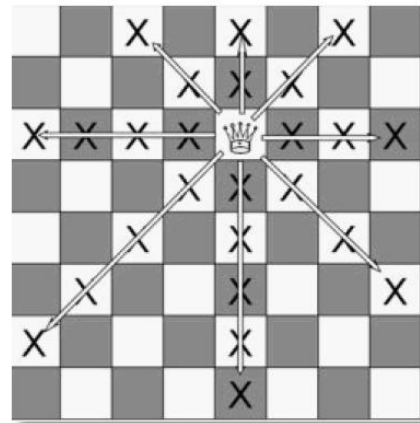


How the pieces move:

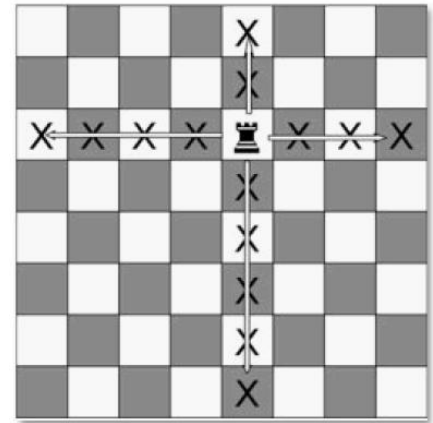
King:



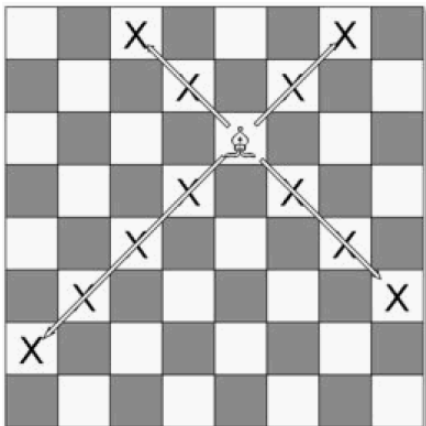
Queen:



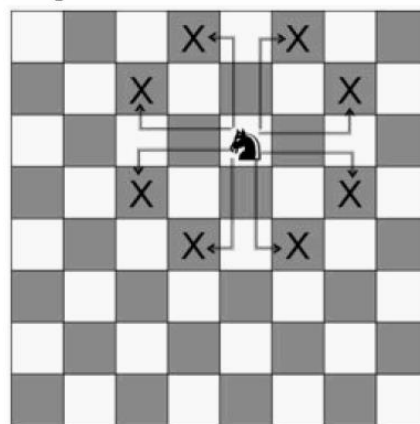
Castle:



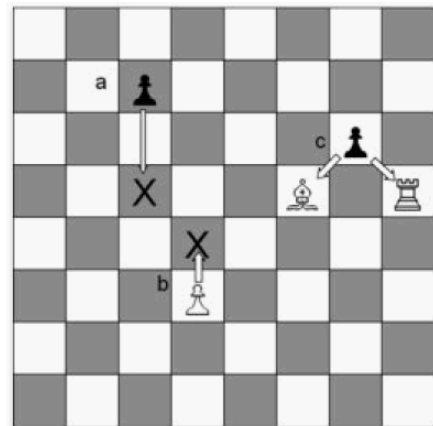
Bishop:



Knight:



Pawn:



How to play:

- White and Black take turns to move a piece (in Chess, the White army always goes first). Remember each piece has its own way of moving as shown above. A piece can capture an opposing piece by landing on that piece's square.
- The aim of the game is to capture the enemy King. If you move one of your pieces to attack the King – in other words, your piece would capture him next move – you say 'check' – this means, roughly 'watch out for your King!'.
- If your opponent can't defend the King in any of these ways, you say 'checkmate' – this means 'the king is dead'. Remember that you must never move your King into 'check' as this would mean your opponent could capture your King straightaway.